

# RATTAN CANE WEBBING

TEXTURED/HANDMADE





## RATTAN CANE WEBBING

A hardy and versatile material, our handwoven artisanal rattan cane webbing is an increasingly sought-after feature. As a sophisticated and relaxed natural fibre, it creates a contrasting background colour or backlighting for a soft warm glow.

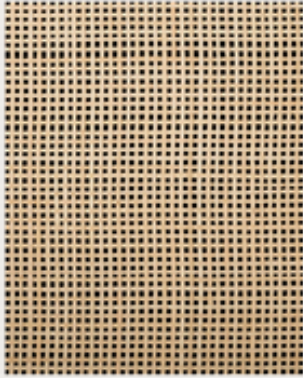
Woven in community villages, our rattan is premium grade and of the highest quality. Our relationship with the community from which it is sourced, dates back more than 40 years, as we continue to support this tradition.

House of Bamboo exclusively offers bespoke bamboo frames with rattan inserts and stocks Australia's largest range of open and closed weaves, with over 20 designs and shades available.

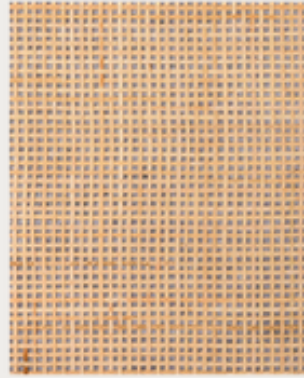




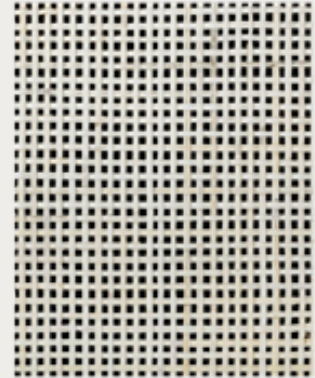
## OPEN WEAVE CW-161



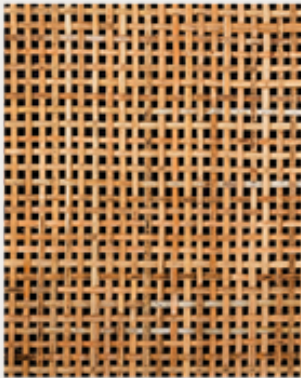
CW-161 RAW



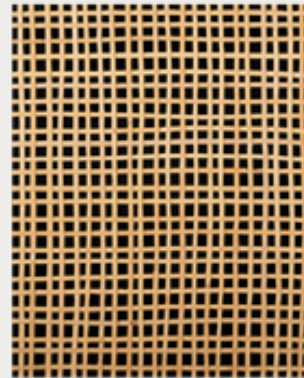
CW-161 BACKING RAW



CW-161 B BLEACHED



CW-161 M RAW

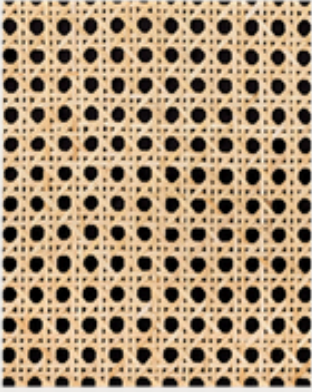


CW-161 N RAW

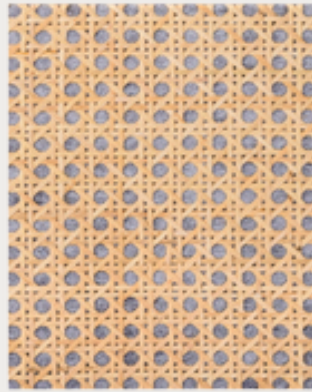
Colour	Length	Width	SKU
Raw	15250mm	450mm	CANE-OPEN-161-W450-H15250-R-R
		600mm	CANE-OPEN-161-W600-H15250-R-R
		910mm	CANE-OPEN-161-W910-H15250-R-R
Backing Raw	2500mm	600mm	CANE-OPEN-161-B-W600-H2500-R-R
		910mm	CANE-OPEN-161-B-W910-H 2500-R-R
B Bleached	15250mm	910mm	CANE-OPEN-161B-W910-H15250-R-B
M Raw	15250mm	600mm	CANE-OPEN-161M-W600-H15250-R-R
		910mm	CANE-OPEN-161M-W910-H15250-R-R
N Raw	15250mm	550mm	CANE-OPEN-161N-W550-H15250-R-R

\*All our materials can be customised to suit your project. We can provide specialised sizes to meet your needs.

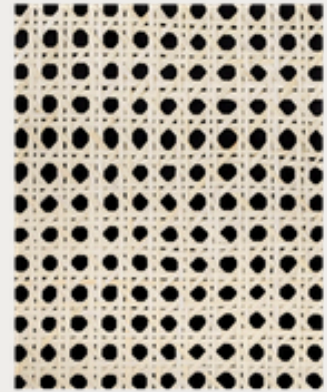
## OPEN WEAVE CW-168



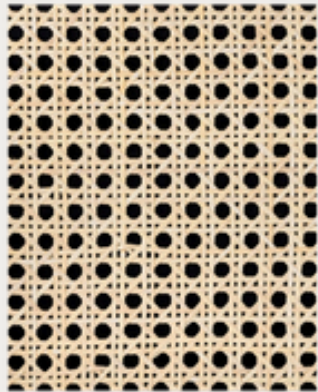
CW-168 RAW



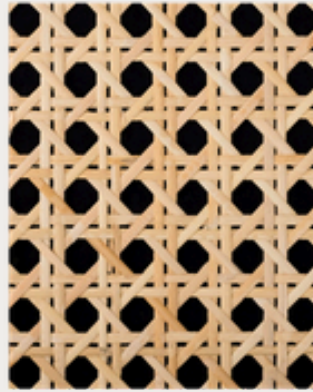
CW-168 BACKING RAW



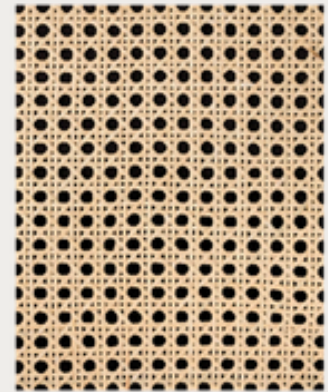
CW-168 IVORY



CW-168 LIGHT



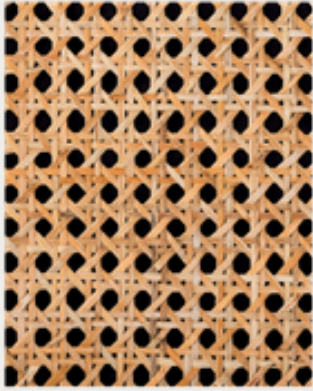
CW-168 L RAW



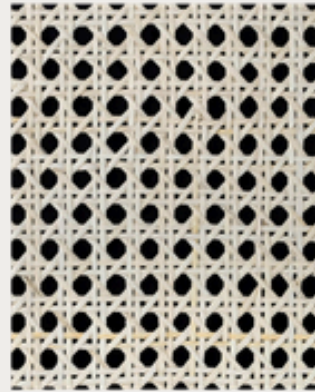
CW-168 SM RAW

Colour	Length	Width	Sku
Raw	15250mm	450mm	CANE-OPEN-168-W450-H15250-R-R
		600mm	CANE-OPEN-168-W600-H15250-R-R
		910mm	CANE-OPEN-168-W910-H15250-R-R
Backing Raw	2500mm	600mm	CANE-OPEN-168-B-W600-H2500-R-R
Ivory	15250mm	600mm	CANE-OPEN-168-W600-H15250-R-I
Light	15250mm	600mm	CANE-OPEN-168-W600-H15250-R-L
L Raw	15250mm	600mm	CANE-OPEN-168L-W600-H15250-R-R
		700mm	CANE-OPEN-168L-W700-H15250-R-R
		750mm	CANE-OPEN-168L-W750-H15250-R-R
SM Raw	15250mm	600mm	CANE-OPEN-168SM-W600-H15250-R-R

OPEN WEAVE CW-3



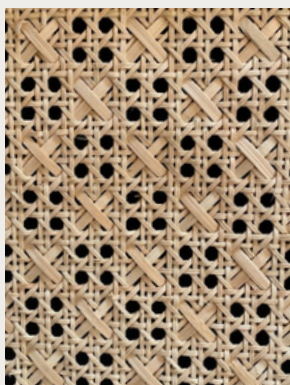
CW-3 RAW



CW-3 B BLEACHED

Colour	Length	Width	SKU
Raw	15250mm	600mm	CANE-OPEN-3-W600-H15250-R-R
		910mm	CANE-OPEN-3-W910-H15250-R-R
B Bleached	15250mm	600mm	CANE-OPEN-3B-W600-H15250-R-B
		910mm	CANE-OPEN-3B-W910-H15250-R-B

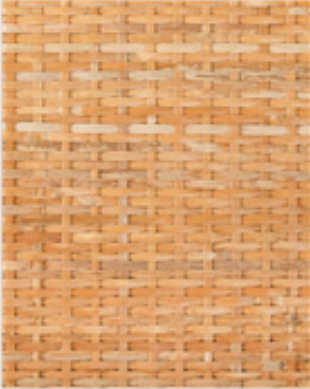
OPEN WEAVE CW-XO



CW-XO RAW

Colour	Length	Width	SKU
Raw	15250mm	600mm	CANE-OPEN-XO-W600-H15250-R-R

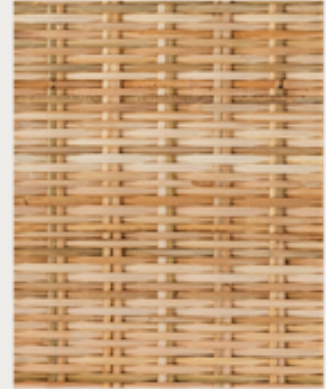
## CLOSE WEAVE CCW



CCW-3 R RAW



CCW-135 RAW



CCW-139 RAW



CCW-143 RAW



CCW-148 RAW



CCW-175 RAW

Colour	Length	Width	Sku
3R Raw	15250mm	910mm	CANE-CLOS-3R-W910-H15250-R-R
135 Raw	15250mm	600mm	CANE-CLOS-135-W600-H15250-R-R
		910mm	CANE-CLOS-135-W910-H15250-R-R
139 Raw	15250mm	600mm	CANE-CLOS-139-W600-H15250-R-R
		910mm	CANE-CLOS-139-W910-H15250-R-R
		1000mm	CANE-CLOS-139-W1000-H15250-R-R
143 Raw	15250mm	600mm	CANE-CLOS-143-W600-H15250-R-R
		910mm	CANE-CLOS-143-W910-H15250-R-R
148 Raw	15250mm	600mm	CANE-CLOS-148-W600-H15250-R-R
175 Raw	15250mm	910mm	CANE-CLOS-175-W910-H15250-R-R
258L Raw	15250mm	910mm	CANE-CLOS-258L-W910-H15250-R-R

## BAMBOO BENEFITS



SOIL EROSION  
PREVENTION &  
RESTORATION



ZERO-WASTE  
LIFE CYCLE



GREENHOUSE  
GAS EMISSIONS



NATURAL  
WATER  
PURIFICATION



SHORT HARVEST  
CYCLE



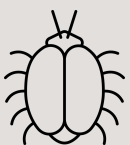
SELF-  
REGENERATING  
GROWTH



SUPERIOR WATER  
RETENTION



SUPERIOR  
CARBON  
SEQUESTRATION



NATURALLY  
RESISTANT  
TO TERMITES



BIODIVERSITY  
PRESERVATION



CLIMATE CHANGE  
MITIGATION



ENHANCED  
OXYGEN  
PRODUCTION



## A BAMBOO LEGACY

At House of Bamboo®, we are carrying on a legacy that was founded last century, when Mark Snyders first began to source environmentally conscious bamboo. Recognised globally as a leading bamboo specialist, we are committed to creating beautiful, environmentally friendly bamboo products and encouraging Australians to embrace the benefits of bamboo.



## A SUSTAINABLE FUTURE

In addition to being House of Bamboo® CEO, Jennifer Snyders also pursues her passion for sustainability by advocating bamboo projects throughout Australia and supporting land regeneration and reforestation.

Having qualified at UNSW with a Bachelor of Science (Architecture), she understands the incredible potential of bamboo and her sense of design and technical understanding has allowed her to develop a range of engineered bamboo products that can out perform timber.

## MEET THE SPECIALIST

We're not typical suppliers. We're material consultants who understand the complexities of your project. Our team of architects, engineers, and sustainability specialists brings real professional insight to every stage.

From specification through installation, we work with you to ensure our engineered bamboo meets your project's needs. Beautiful spaces, people actually stop and notice.



**Jennifer Snyders**

CEO & Bamboo Expert |  
NSW

[Contact me](#)



**Anna Borella**

Interior Designer & Bamboo  
Specialist | NSW

[Contact me](#)



**Mayra Miranda**

Architect, Interior Designer  
& Bamboo Specialist | NSW

[Contact me](#)



**Greg Severin**

Bamboo Specialist | WA

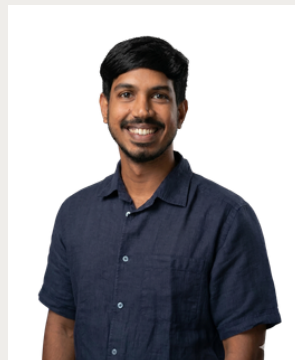
[Contact me](#)



**Rachel Potter**

Interior Designr, Sales and  
Design Consultant | QLD

[Contact me](#)



**Vik Rodrigo**

Bamboo Specialist | VIC

[Contact me](#)



**Federico Riches**

Architect, Sustainable  
design



**Isabella van der Griend**

Materials Specialist,  
Bamboo Advocate

## HEAD OFFICE & SHOWROOM



13 Erith Street, Botany NSW 2019

## DISPLAY CENTRE QLD

### BUILD AND DESIGN CENTRE BRISBANE



66 Merivale Street, South Brisbane QLD 4101

## CONTACT



For General Enquiries

[info@houseofbamboo.com.au](mailto:info@houseofbamboo.com.au)



Local or Interstate: 1800 240 996

International: (+61)2 9666 5703

## ONLINE



[www.houseofbamboo.com.au](http://www.houseofbamboo.com.au)



[@house.of.bamboo.australia](https://www.instagram.com/house.of.bamboo.australia)

house of  
bamboo

EST. 1972